

## VALVOLA REGOLATRICE DI FLUSSO tipo FPMU

Tipo / Type

**FPMU-\*.\*\*.\***

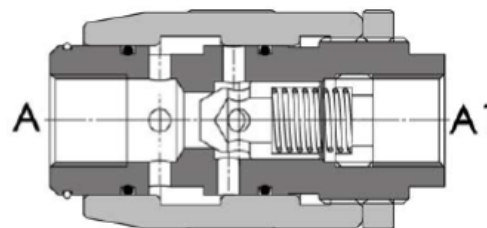
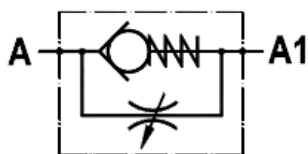
Sez./Section

**I**

Pag./Page

**25-01**

Valvola regolatrice di flusso unidirezionale, tipo a manicotto  
*Restrictor valve, barrel type*



### SPECIFICHE

**Materiali:** corpo e parti interne in acciaio. La superficie esterna è protetta mediante zincatura gialla.

**Portata:** 150 l/min

**Pressione max.:** 350 bar, vedasi tabella a parte

**Pressione di apertura:** standard 0,5 bar, a richiesta 2.5-5-10 bar

### SPECIFICATIONS

**Materials:** body and internal parts are steel made. External surface yellow zinc plated.

**Rated flow:** 150 l/min

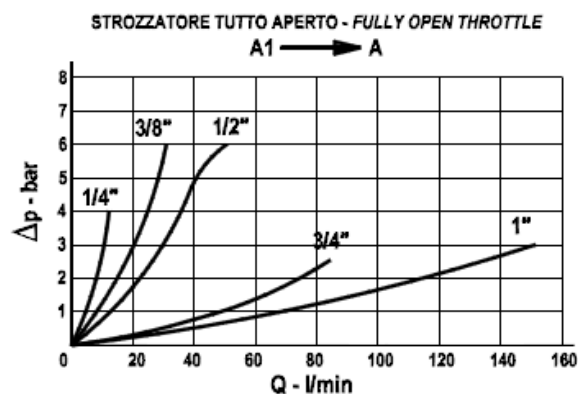
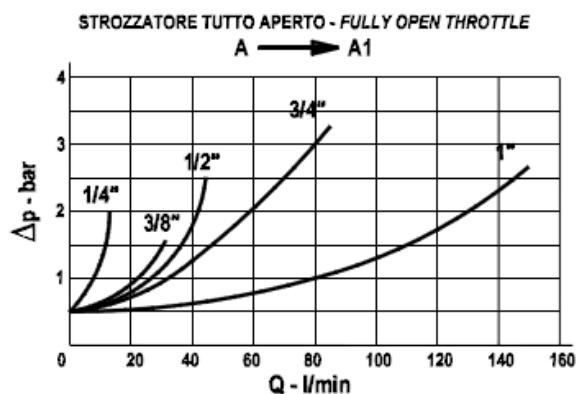
**Max. pressure:** 350 bar, see data sheet

**Cracking pressure:** 0.5 bar standard, 2.5-5-10 bar on request

### DIAGRAMMA PERDITE DI CARICO - PRESSURE DROP CURVES

Viscosità olio 24 mm<sup>2</sup>/sec. (3,5 °E)  
Temperatura 50 °C

Oil viscosity 24 mm<sup>2</sup>/sec. (3,5 °E)  
Temperature 50 °C



## VALVOLA REGOLATRICE DI FLUSSO tipo FPMU

Tipo / Type

**FPMU-\*.\*.\***

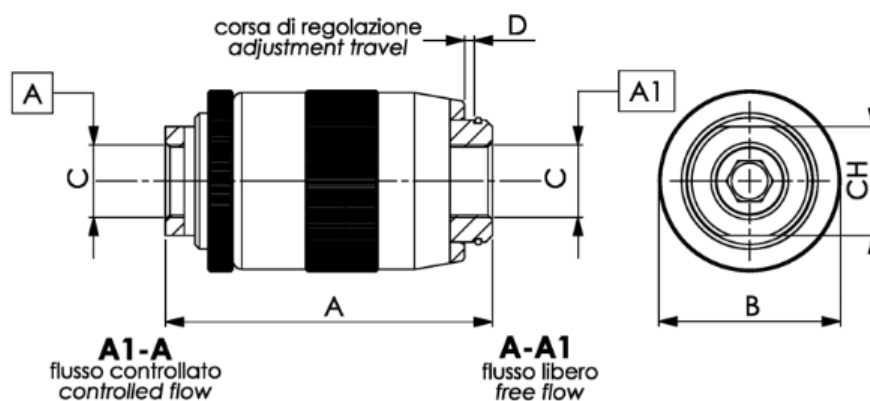
Sez./Section

**I**

Pag./Page

**25-02**

Valvola regolatrice di flusso unidirezionale, tipo a manicotto  
*Restrictor valve, barrel type*



TIPO TYPE	PORTATA MAX. MAX. FLOW	PRESSIONE MAX. MAX. PRESSURE	A	B	C	D	CH	PESO WEIGHT
	l/min	bar	mm	mm	mm	mm	mm	mm
FPMU 1/4	12	350	62	34	1/4"	4.5	19	0.275
FPMU 3/8	30	350	72	40	3/8"	5.5	24	0.430
FPMU 1/2	45	310	80	46	1/2"	7	30	0.630
FPMU 3/4	85	280	100	54	3/4"	10	36	1.050
FPMU 1	150	250	125	65	1"	12	41	1.960

### ESEMPIO DI ORDINAZIONE - ORDERING CODE EXAMPLE

